

# Booster Pump

Aquatica's economical new booster pump can up-to-double the flow and pressure output for any home water system.

## Key Advantages

- ➔ Starts & stops automatically when tap is opened & closed
- ➔ Compact and lightweight
- ➔ Quiet operation
- ➔ 2 Year warranty
- ➔ Easy installation
- ➔ Can be used as a circulating pump for instant hot water
- ➔ Can double flow output on low pressure water systems
- ➔ Class F heavy duty insulation - motor safe to run continuously without overheating
- ➔ Certified to meet all New Zealand compliance standards



This pump has a two year warranty

### **Aquatica Booster Pump Certification:**

Tested & certified to AS/NZS 60335.2.51 : 2012  
AS/NZS 60335. 1 : 2011 + A1 : 2012 + A2 : 2014

Safety of household and similar electrical appliances  
part 2.51 : particular requirements for stationary  
circulation pumps for heating and service water installations

Report reference number: GJW2016 - 5510



### **Auckland**

9 Saunders Place, Avondale  
PO Box 19146, Avondale, Auckland 1746  
Telephone: 09-828 2068, Facsimile: 09-828 2069  
Email: info@aquatica.co.nz

### **Wellington**

Telephone: 09-828 2068, Facsimile: 04-299 2990

### **Christchurch**

16 Maces Road, Bromley  
Telephone: 03-384 6245, Facsimile: 03-384 6921

**The affordable answer  
to turning your annoying water trickle  
into a respectable stream**

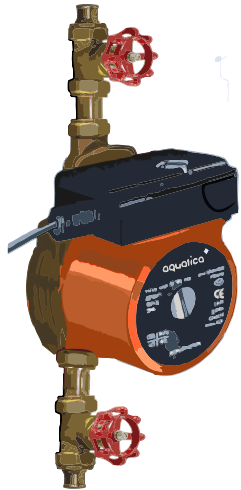


# Aquatica Pumps

The Aquatica Booster Pump is only intended for use within a domestic hot water system. It should be fitted onto the hot water supply line to the house.

The pump should never be operated dry.

For ease of installation and service removal the pump is supplied with two mac unions. Failure to install these will void the warranty.

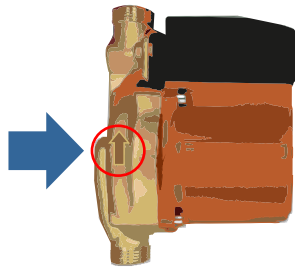


It is recommended that isolation valves be fitted (left) on both the inlet and the outlet to enable servicing the pump.

Flush all lines prior to installation of the pump. Ensure the pump is installed correctly with the arrow marked on the casting in the direction of the flow of the hot outlet.

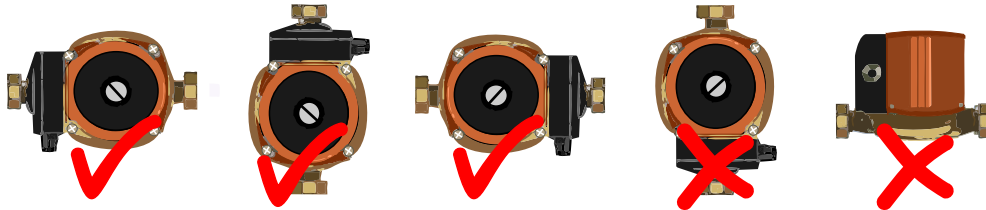


Pump Connection  
3/4" BSP male  
Pump Fittings Supplied:  
3/4"-1/2" BSP female/male Mac Union  
1/2" - 3/4" BSP bush



## Positioning

The axis of pump must be in the horizontal plane. Terminal box must not be mounted below the pump.



The pump is fitted with a standard 3 pin NZ/Australian plug to comply with local regulations. This socket must be earthed.

Before turning the pump on, open the tap to remove all the air from the pump and the pipework.

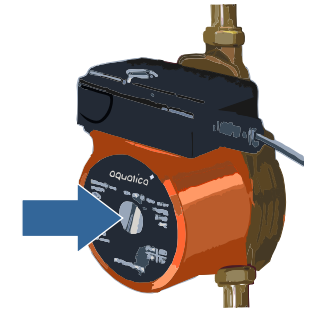
**Note: The motor should not be mounted in any zoned area. Motor is to be mounted on the outlet of the hot water cylinder. Motor does not require its own independent circuit, it plugs into a 3 pin wall outlet.**

Turn the power on

Select AUTO on the pump

## How to Prime (if necessary)

- Ensure the power is on
- Turn selector to AUTO
- Open the tap
- Loosen the prime screw in the centre of the pump until the water is discharged
- Re-tighten the prime screw



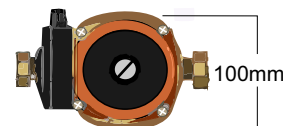
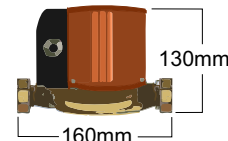
## Pump Functions

- OFF: Self explanatory
- AUTO: The pump starts automatically when an outlet is opened and stops when it is closed
- MANUAL: Rarely used as at least one outlet must be open to prevent overheating. However, may be used in this mode as a circulating pump for constant hot water or as a ring feed pump.

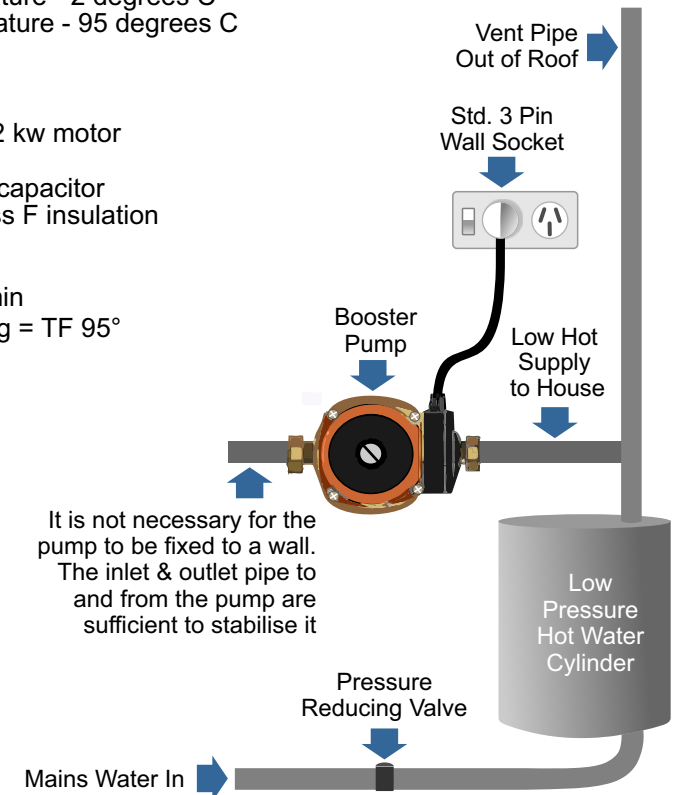
Minimum water temperature - 2 degrees C  
Maximum water temperature - 95 degrees C

## Pump Motor Specs

- 120 WATTS - 0.12 kw motor
- 220 volts/50 HZ
- 0.55 AMPS - 3 uf capacitor
- IP rating: 42 - class F insulation
- 45 decibels
- Max head = 9m
- Max flow = 23 l/min
- Temperature rating = TF 95°



Weight: 2.76kgs



It is not necessary for the pump to be fixed to a wall. The inlet & outlet pipe to and from the pump are sufficient to stabilise it