



APPLICATIONS



TOILET



HAND BASIN



SHOWER



WMTS 106:2019
Certificate No. 23048
Manufacturer: SFA
Brand: Saniflo

PRODUCT REFERENCE:
SA81

Saniaccess® 3

Designed to provide easy access for en-suite bathroom applications. Convenient access panels allow you to service and maintain the macerator without having to remove it.



TECHNICAL CHARACTERISTICS

Discharge Pipework	20 mm
Motor Power	400 Watts
Voltages	220-240 V/50 Hz
Working Waste Water Temp	35°C
Product Weight	6.4 kg
Overall Measurements	494 x 333 x 169 mm
Inlet Pipework	40 mm
IP Rating	IP44



Double access:

A Direct access to the blade if maintenance is required

B Direct access to electric components

WHY CHOOSE THIS PRODUCT?

Easy service access

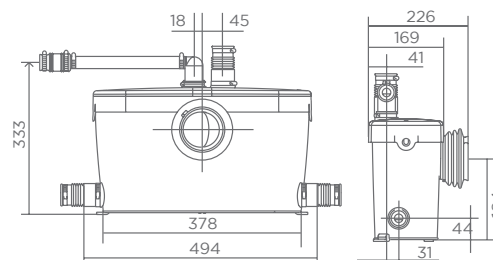
Suitable for one toilet, basin and shower

Easy maintenance without removal of unit

Macerator needs minimum 4.5 L of unrestricted flush for optimal function

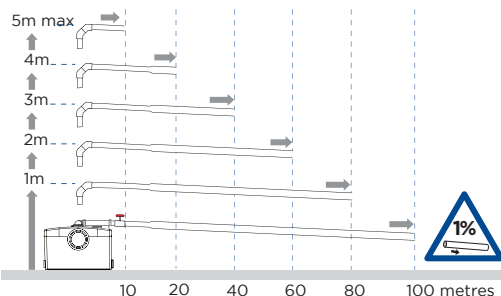
Quiet technology

Ideal for adding a complete bathroom or en-suite anywhere

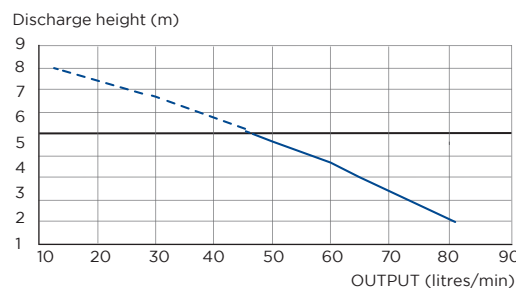


VERTICAL/HORIZONTAL PERFORMANCE

Increase size of horizontal run by one pipe size after 5m. All horizontal pipework requires a minimum of 1:100 fall.



FLOW RATE PERFORMANCE CHART



Shaking up water

Made in France to the highest standards, needs to be installed by a licensed plumber